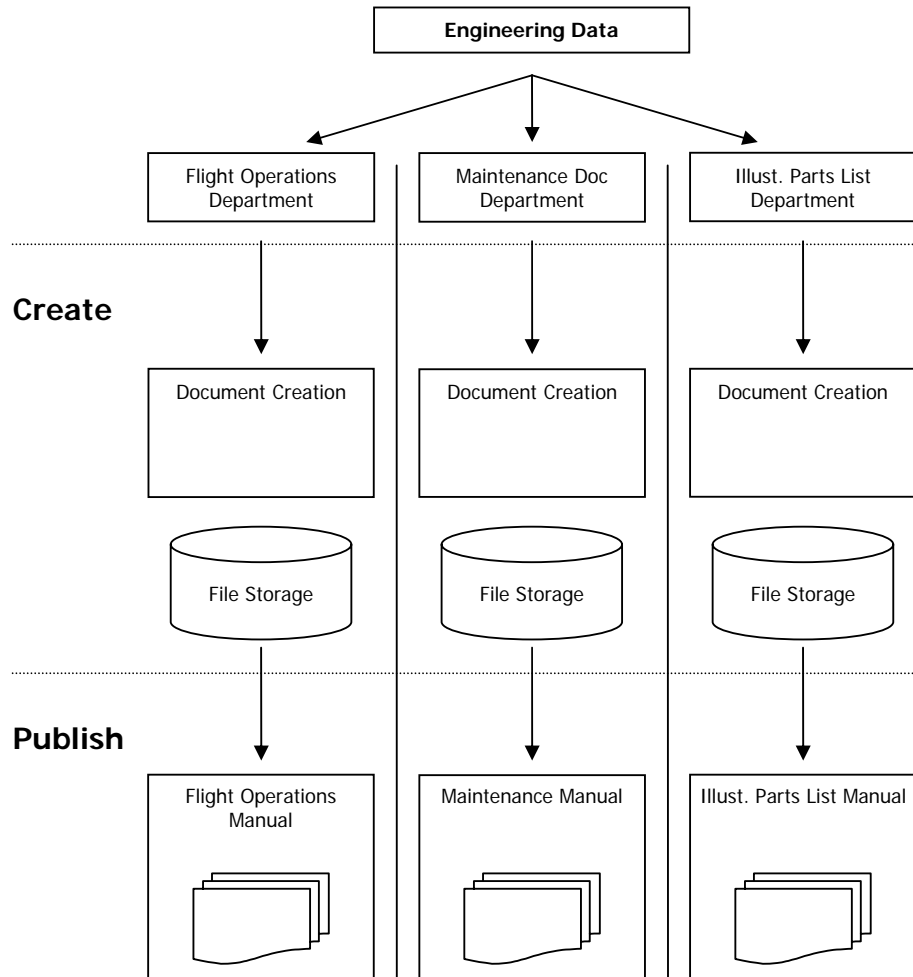


# Basic S1000D Comparison with Traditional Documentation Methods

## Traditional Document Creation

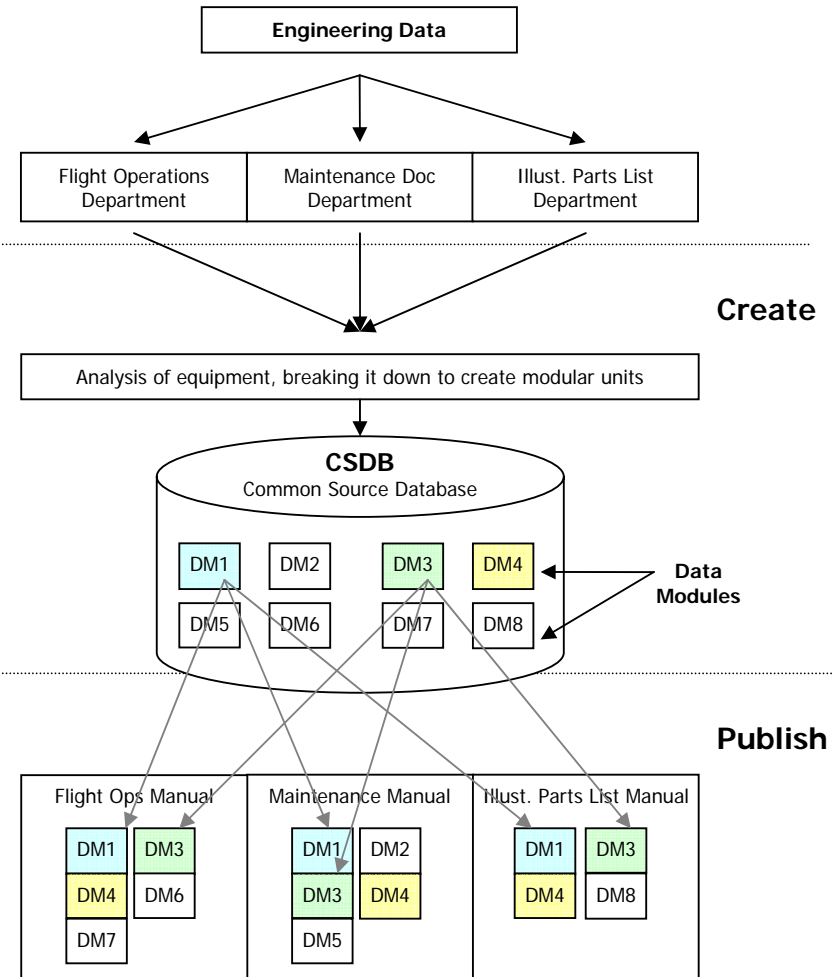
Departments working on similar data in isolation, data and effort are duplicated



Manuals may contain duplicated information which could introduce errors. Document maintenance increases when equipment evolves as changes need to be made to each manual.

## S1000D Document Creation

Departments share information in a Common Source Database. Documents are written as modular units (Data Modules) that facilitate document re-use.



Common elements (shown here as DMs 1, 3 and 4) are repeated across three different manuals, but they are only created once. Future changes in one Data Module become replicated across all future manual revisions.